



ALDO AERIAL
ARTIST IMPRESSION



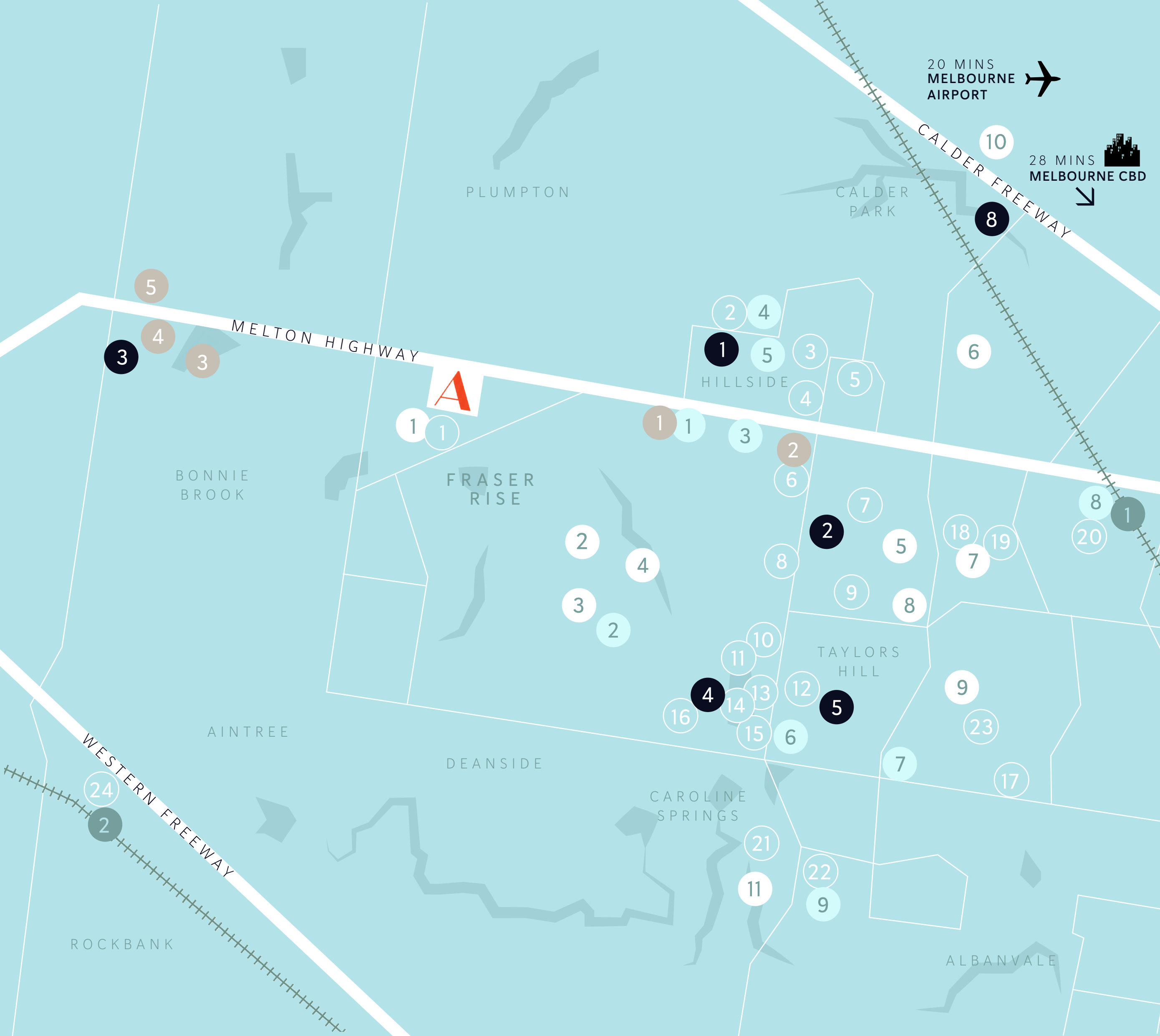
Discover Aldo, a masterplanned community in Melbourne's flourishing new suburb, Fraser Rise. Designed to create a balanced lifestyle of growth, convenience and connection.

Previously known as Plumpton, Fraser Rise is a thirty minute drive North-West of Melbourne's CBD and has grown by a substantial 130% in the last five years. Fraser Rise is a real estate pocket showing great promise in the future and an investment in a quality lifestyle.

With 53 hectares full of potential, Aldo includes direct access off the Melton Highway, an array of education options, open green spaces and a waterway which runs through the heart of the community, bringing the estate to life.





Close enough for an easy commute to the city, yet further enough away to indulge in nature and healthy living, Aldo is an ideal community to setup a prosperous future for you and your family to thrive.

1069 Melton Highway Fraser Rise 3335



20 MINS
MELBOURNE
AIRPORT 

28 MINS
MELBOURNE
CBD 

-  **TRAIN STATIONS**
 1. WATERGARDENS STATION
 2. ROCKBANK STATION
-  **EDUCATION**
 1. FUTURE ALDO SCHOOL
 2. SYDENHAM-HILLSIDE PRIMARY SCHOOL
 3. BELLEVUE HILL PRESCHOOL
 4. GUARDIAN CHILDCARE & EDUCATION HILLSIDE
 5. CANA CATHOLIC PRIMARY SCHOOL
 6. LITTLE MUNCHKINS CHILDCARE CENTRE
 7. HILLSIDE COTTAGE EARLY LEARNING & KINDERGARTEN
 8. GOODSTART EARLY LEARNING HILLSIDE
 9. COMMUNITY KIDS HAVEN EARLY LEARNING & KINDER
 10. SPRINGSIDE PRIMARY SCHOOL
 11. SPRINGSIDE KINDERGARTEN
 12. GOODSTART EARLY LEARNING TAYLORS HILL
 13. PENGUIN CHILDCARE CAROLINE SPRINGS
 14. ST GEORGE PRECA PRIMARY SCHOOL
 15. SOUTHERN CROSS GRAMMAR
 16. SPRINGSIDE WEST SECONDARY COLLEGE
 17. GILSON COLLEGE - TAYLORS HILL
 18. COPPERFIELD COLLEGE
 19. SYDENHAM HILLSIDE PRIMARY SCHOOL
 20. EMMAUS CATHOLIC PRIMARY SCHOOL
 21. CATHOLIC REGIONAL COLLEGE CAROLINE SPRINGS
 22. KOROROIT CREEK YMCA EARLY LEARNING CENTRE
 23. TAYLORS HILL PRIMARY SCHOOL
 24. ROCKBANK PRIMARY SCHOOL
-  **PARKS & NATURE RESERVES**
 1. ALDO PARK
 2. GOULDING PARK
 3. MAWSON GARDENS
 4. BORONIA RESERVE DOG PARK
 5. CALDER PARK
 6. PIONEER PARK
 7. OVERTON LEA RESERVE
 8. HOMESTEAD PARK
 9. POMONA PARK
 10. ORGAN PIPES NATIONAL PARK
 11. CAROLINE SPRINGS RECREATION RESERVE
-  **SHOPPING & SERVICES**
 1. ASPIRE MEDICAL AND SKIN CENTRE
 2. CITY VISTA IGA
 3. AMBULANCE VICTORIA
 4. FOODWORKS HILLSIDE
 5. HILLSIDE MEDICAL CENTRE
 6. TAYLORS HILL VILLAGE
 7. WATERVALE SHOPPING CENTRE
 8. WATERGARDENS SHOPPING CENTRE
 9. CS SQUARE SHOPPING CENTRE
-  **SPORTS & RECREATION**
 1. HILLSIDE FOOTBALL CLUB & CRICKET CLUB
 2. PAUL SADLER SWIMLAND PARKWOOD GREEN
 3. XTREME PAINTBALL
 4. MACPHERSON PARK SPORTS COMPLEX
 5. TAYLORS HILL SPORTS PARK
 6. CALDER PARK THUNDERDOME
-  **HOSPITALITY**
 1. FISH SALT
 2. THE SUGAR GUM HOTEL
 3. GALLI WINERY
 4. WITCHMOUNT ESTATE WINERY
 5. BORN & RAISED

An artist's impression of a park wetland area at dusk. The scene features a narrow stream flowing through tall grasses and reeds. In the background, modern residential buildings are visible, with a person walking a dog on a path to the right. The sky is a soft mix of purple and blue, and the overall atmosphere is peaceful and natural.

DISCOVER NATURE

Aldo Park has been designed for young ones, old ones, four-legged friends and fitness fanatics. Designed with a range of facilities, such as sheltered BBQ areas, a fenced Dog Park and even a creative playground which includes an in-ground trampoline, scooter track, waterfall and more!

Connecting to Aldo Park is Olive Grove Creek, running through the spine of the Estate, providing an attractive outlook and promoting a healthy, active lifestyle with pathways and bike lanes for exercise, and seating for those who want to slow down and feed the ducks.

No matter what age you are or what season it is - there will always be something to do at Aldo Park.

ALDO WETLANDS
ARTIST IMPRESSION

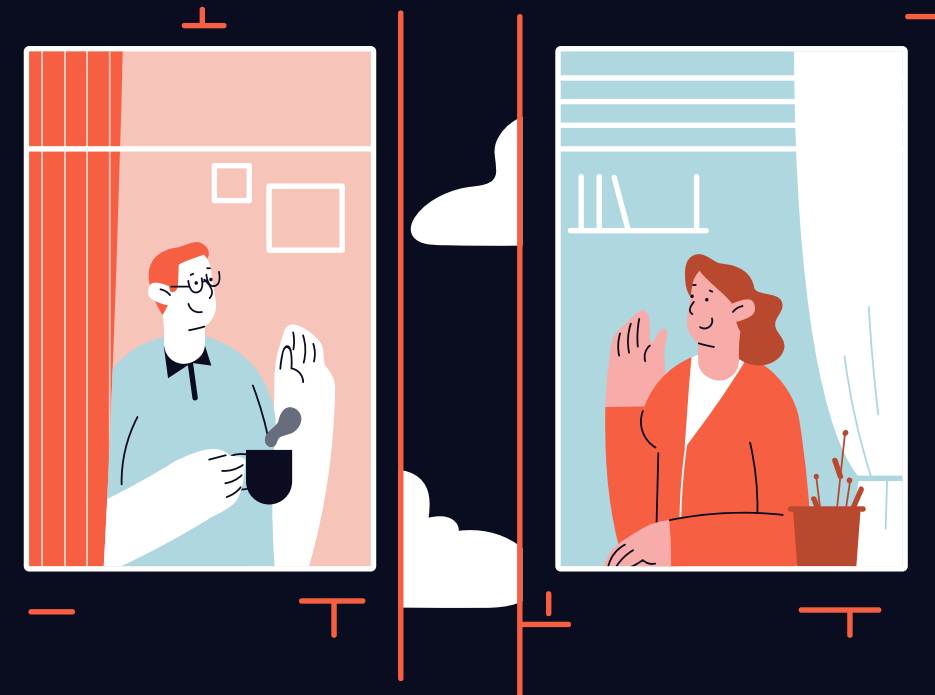


DISCOVER EDUCATION

The sound of the school bell ringing to finish the day, kicking the winning goal during the final siren, getting 100% on your math test.

Ensuring your family have access to the best education possible is important.

No matter what stage of your child's life, Fraser Rise is abundant with the finest public and private education options for every age bracket. Not only does Aldo have a proposed Childcare Center, it features a large future Non-Government Secondary School, so your children can safely walk to and from school every day.



DISCOVER CONVENIENCE

That quick run to the supermarket because you're out of milk, your neighbour taking your bins out when you forget to.

Life is messy, but it can be made easier.

Even though Fraser Rise is a new suburb, all essential amenities needed for you and your family are here.

Discover the amazing fresh produce at the Marketplace, the diverse restaurant selection and a days worth of shops to browse at Watergardens Plaza - only an 8 minute drive away. Medical practices with an range of different services are also easily accessible and there are many aged care facilities close by.

DISCOVER CONNECTION

Driving home from work on a Friday afternoon, sharing a smile as you walk passed a fellow resident on the street, having your local cafe greet you by your name and your order.

It's connections that make life easy.

Morning traffic is a thing of the past, with Aldo having direct access from the Melton Highway, providing you that easy 30 minute drive into the Melbourne CBD via the Calder Freeway. The commute into the city is also made simple with a 45 minute train ride from Watergardens Station on the Sunbury Line.

Need a holiday?
Melbourne Tullamarine Airport is in very close proximity with a measley 20 minute transit.



Every effort and situation has been taken into account in the planning of Aldo Estate. A community-focused masterplan, with a diverse range of lot sizes and shapes to accommodate anyone who wants to call Fraser Rise home.

First home buyers, downsizers, upsizers, investors - there are options for everyone.





ALDO STREETSCAPE
ARTIST IMPRESSION

Aldo Sales Office
1069 Melton Highway, Fraser Rise
Open 7 days: 11am — 4pm

www.aldoestate.com.au

