



ALDO

HOUSE & LAND PACKAGE

LOT 1137



Hume 17

\$661,200*

TURNKEY PACKAGE FOR FIRST HOME BUYERS

House size: 161m²

Land size: 263m²

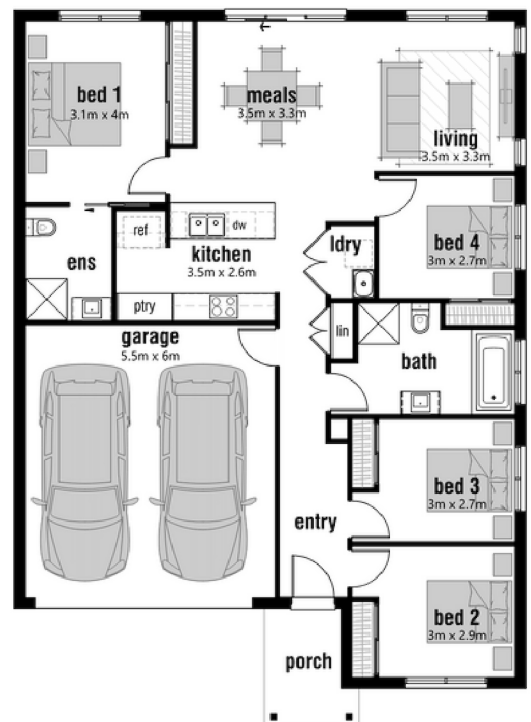


Close enough for an easy commute to the city, yet further enough away to indulge in nature and healthy living, Aldo is an ideal community to setup a prosperous future for you and your family to thrive. With 53 hectares full of potential, Aldo has direct access off the Melton Highway, a childcare centre, a future school, a park and a waterway which runs through the heart of the community.

The Hume 17 is jam packed with accommodation and premium value. Yes, it has 4 bedrooms with an extremely spacious master which has private access to the backyard. The centralised well-equipped kitchen provides excellent interaction with the dining and living zones to keep the family connected. Perfect for first home buyers, investors and a growing family.

PACKAGE INCLUSIONS:

- 7 Star Energy and Livability compliance
- Coloured concrete driveway, path and porch
- Front and rear landscaping
- Boundary fencing and gate
- Compliance with council requirements and regulations
- Double glazed windows with flyscreens
- 2550mm Ceiling Heights
- Quality flooring throughout
- Heating and Cooling solutions
- LED Downlights
- Window furnishings throughout (excl. wet areas)
- Soft closers to cabinetry
- Electric heat pump hot water system
- Solar power system
- Slimline rainwater tank
- Sectional garage door
- Semi-frameless shower screens
- Built-in robes with vinyl sliding doors
- Double towel rails
- Double bowl kitchen sink
- Designer tapware throughout
- Fibre optic connection
- Dishwasher and microwave provisions
- Letterbox and clothesline
- Double power points with USB points to key locations
- Concealed laundry plumbing
- Plus many more!



ENQUIRE TODAY

Contact us on 03 9989 5080

Visit highlineliving.com.au for more information.



*First Home Owners grant \$10,000 has been deducted from price. Whilst every care has been taken in the preparation of this flyer, it is intended to provide general information only and does not constitute a complete offer to supply. All photographs, plans, maps and drawings are illustrative only and may not be to scale. Images may show items not included in the advertised price such as landscaping features, fencing, furniture and feature lighting - refer to detailed plans and specifications available by contacting Highline Living. The price is calculated based on developer supplied engineering drawings and is subject to change should the final site conditions differ from these drawings. Price is for the purchase of the land from the developer and the building contract with Highline Living, all property transaction charges such as stamp duty, council rates etc are not included and purchasers should consult their conveyancer for an estimate of these costs. Information contained is correct at the time of printing. CDB-U 75856.